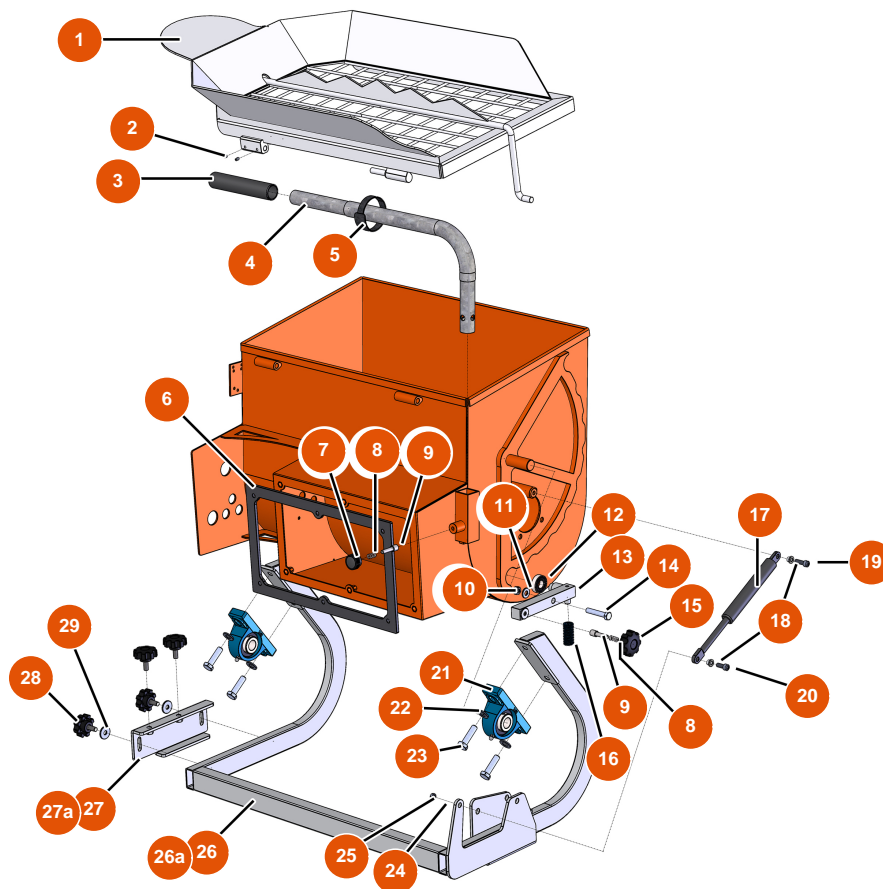


Sequenzieller Mischer MIXER 80 - FAHRGESTELL

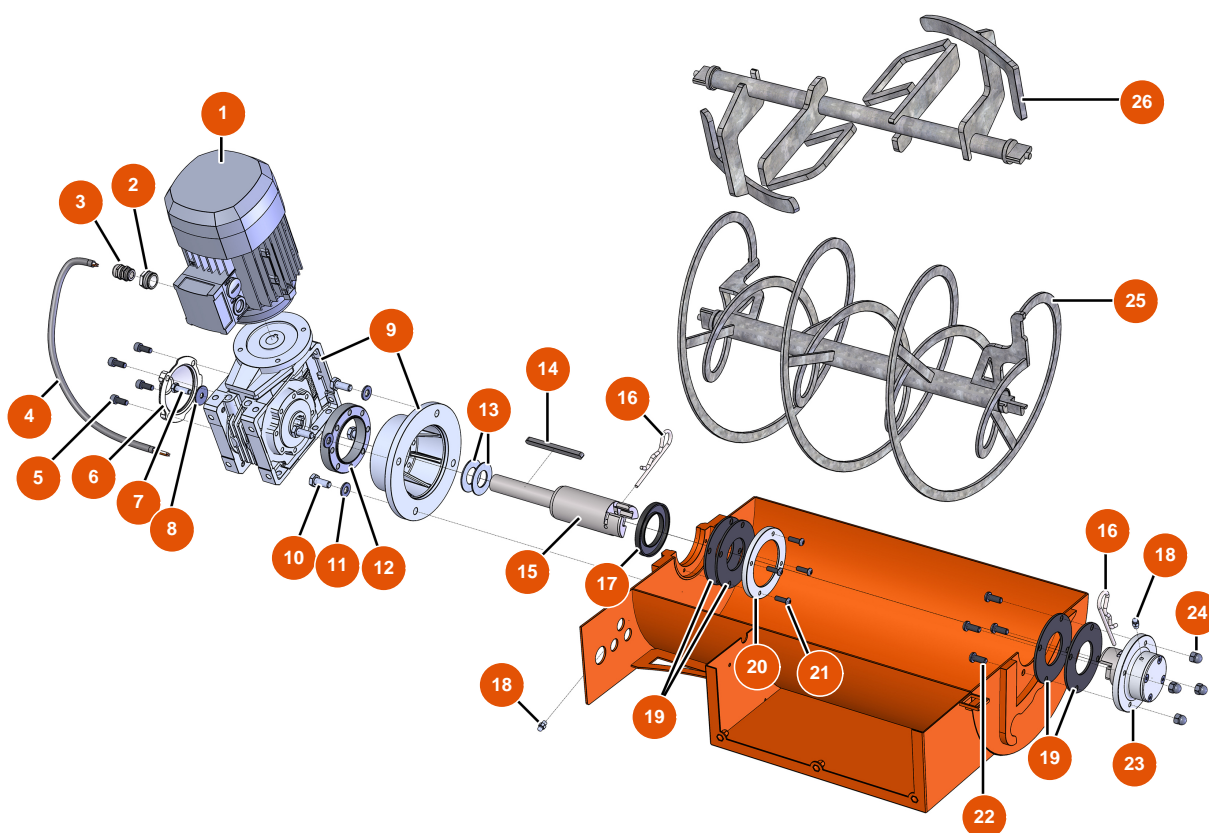


Détails des pièces

| Pos. | Référence | Désignation |
|------|-----------|--|
| 1 | EU11488 | 1 |
| 2 | EU1010359 | 2 |
| 3 | EU90255 | 3 |
| 4 | EU11507 | 4 |
| 5 | EU11507 | 5 |
| 6 | EU12844 | 6 |
| 7 | EU20001 | 7 |
| 8 | EU60040 | 8 |
| 9 | EUM10047 | 9 |
| 10 | EU13980 | 10 |
| 11 | EU80260 | Mittlere Unterlegscheibe ø 8 Edelstahl |
| 12 | EU1010323 | 12 |
| 13 | EU11530 | 13 |

| Pos. | Référence | Désignation |
|------|-----------|---|
| 14 | EU11798 | 14 |
| 15 | EU11515 | 15 |
| 16 | EU11495 | 16 |
| 17 | EU11497 | 17 |
| 18 | EUM10048 | 18 |
| 19 | EU90996 | Zylinderschraube 6x20 Edelstahl |
| 20 | EU80614 | 20 |
| 21 | EU11502 | 21 |
| 22 | EU80261 | Mittlere Unterlegscheibe ø 10 Edelstahl |
| 23 | EU30259 | 23 |
| 24 | EU70087 | Schmale Unterlegscheibe ø 6 Edelstahl |
| 25 | EU14217 | Mutter M 6 Nylstop Inox |
| 26 | EU11485 | 26 |
| 26a | EUC22731 | 26a |
| 27 | EU11484 | 27 |
| 27a | EUC22729 | 27a |
| 28 | EU11514 | 28 |
| 29 | EU80263 | 29 |

Sequenzieller Mischer MIXER 80 - GETRIEBE

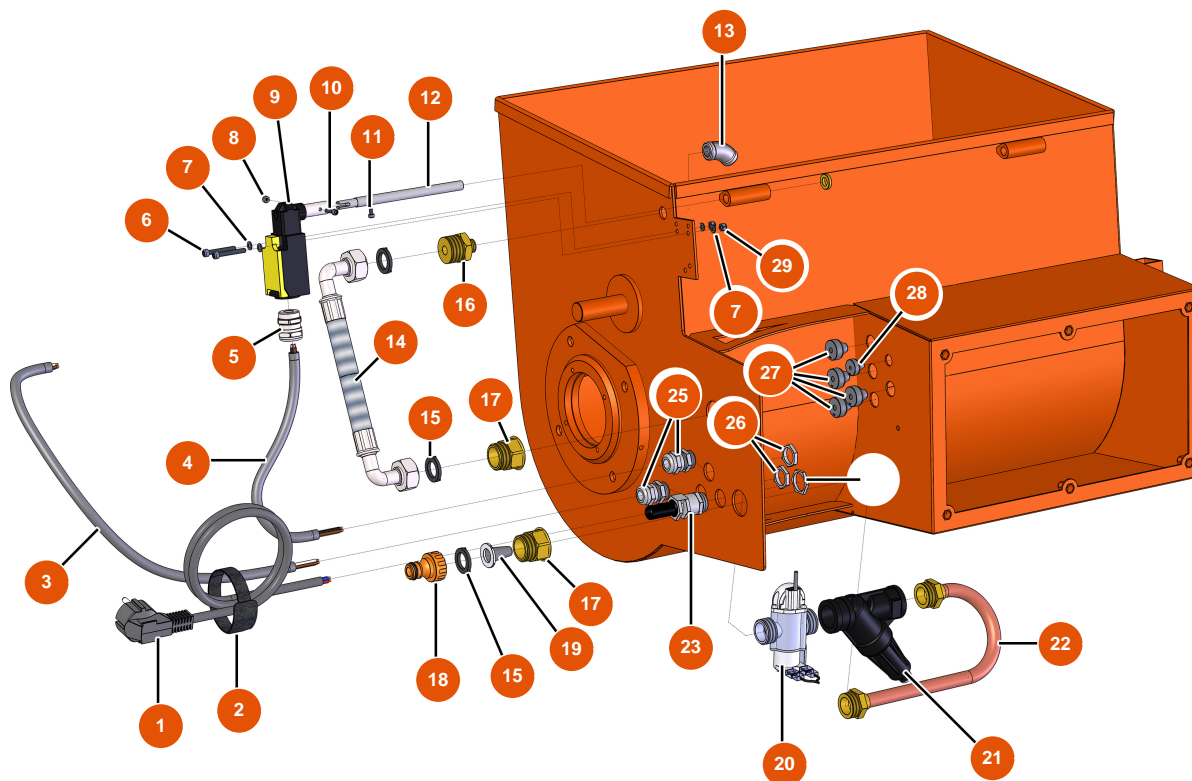


Détails des pièces

| Pos. | Référence | Désignation |
|------|-----------|---|
| 1 | EU30043 | 1 |
| 2 | EU80446 | 2 |
| 3 | EU30082 | 3 |
| 4 | EU90606 | 4 |
| 5 | EU12249 | 5 |
| 6 | EU80287 | 6 |
| 7 | EU11544 | THEF-Schraube 8 x 25 |
| 8 | EU80263 | 8 |
| 9 | EU11513 | 9 |
| 10 | EU30257 | 10 |
| 11 | EU80261 | Mittlere Unterlegscheibe ø 10 Edelstahl |
| 12 | EU11524 | 12 |
| 13 | EUC20657 | 13 |

| Pos. | Référence | Désignation |
|------|-----------|--|
| 14 | EU90750 | 14 |
| 15 | EUM10063 | 15 |
| 16 | EU12157 | 16 |
| 17 | EU70107 | 17 |
| 18 | EU60012 | 18 |
| 19 | EU12042 | 19 |
| 19 | EUM07013 | 19 |
| 20 | EUM10065 | 20 |
| 21 | EU12110 | 21 |
| 22 | EU12111 | Zylindrische Linsenkopfschraube 8 x 20 Edelstahl |
| 23 | EUM07013 | 23 |
| 24 | EU30253 | 24 |
| 25 | EUC20233 | 25 |
| 26 | EUC20260 | 26 |

Sequenzieller Mischer MIXER 80 - Hydraulikkreislauf

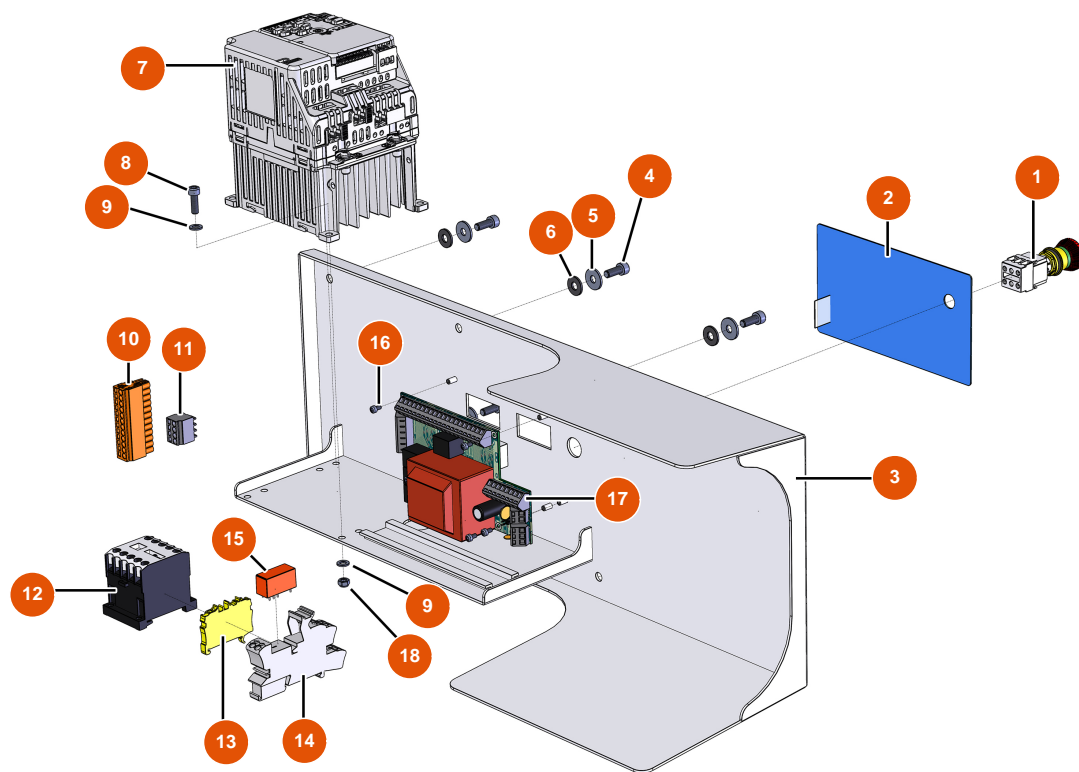


Détails des pièces

| Pos. | Référence | Désignation |
|------|-----------|----------------------------|
| 1 | EU90180 | 1 |
| 2 | EU12410 | 2 |
| 3 | EU90606 | 3 |
| 4 | EU30018 | 4 |
| 5 | EU80448 | 5 |
| 6 | EU11882 | 6 |
| 7 | EU30267 | 7 |
| 8 | EU12737 | 8 |
| 9 | EU12742 | 9 |
| 10 | EU12250 | 10 |
| 11 | EU13329 | Zylinderkopfschraube 3 x 6 |
| 12 | EU11500 | 12 |
| 13 | EU12104 | 13 |

| Pos. | Référence | Désignation |
|------|-----------|-------------|
| 14 | EU12642 | 14 |
| 15 | EU11618 | 15 |
| 16 | EU12640 | 16 |
| 17 | EU12562 | 17 |
| 18 | EU80124 | 18 |
| 19 | EU80128 | 19 |
| 20 | EU12341 | 20 |
| 21 | EU12066 | 21 |
| 22 | EUC20583 | 22 |
| 23 | EU80450 | 23 |
| 25 | EU30040 | 25 |
| 26 | EU30333 | 26 |
| 27 | EU11564 | 27 |
| 28 | EU11563 | 28 |
| 29 | EU30266 | 29 |

Sequenzieller Mischer MIXER 80 - ELEKTRISCHER SCHALTKASTEN



Détails des pièces

| Pos. | Référence | Désignation |
|------|-----------|-------------|
| 1 | EU13015 | 1 |
| 2 | EU13007 | 2 |
| 3 | EUC20758 | 3 |
| 4 | EU90157 | 4 |
| 5 | EU30292 | 5 |
| 6 | EU10067 | 6 |
| 7 | EU11781 | 7 |
| 8 | EU90160 | 8 |
| 9 | EU10142 | 9 |
| 10 | EU11771 | 10 |
| 11 | EU12755 | 11 |
| 12 | EU11918 | 12 |
| 13 | EU30038 | 13 |

| Pos. | Référence | Désignation |
|------|-----------|----------------------------|
| 14 | EU12751 | 14 |
| 15 | EU12752 | 15 |
| 16 | EU13329 | Zylinderkopfschraube 3 x 6 |
| 17 | EU30673 | 17 |
| 18 | EU11880 | 18 |