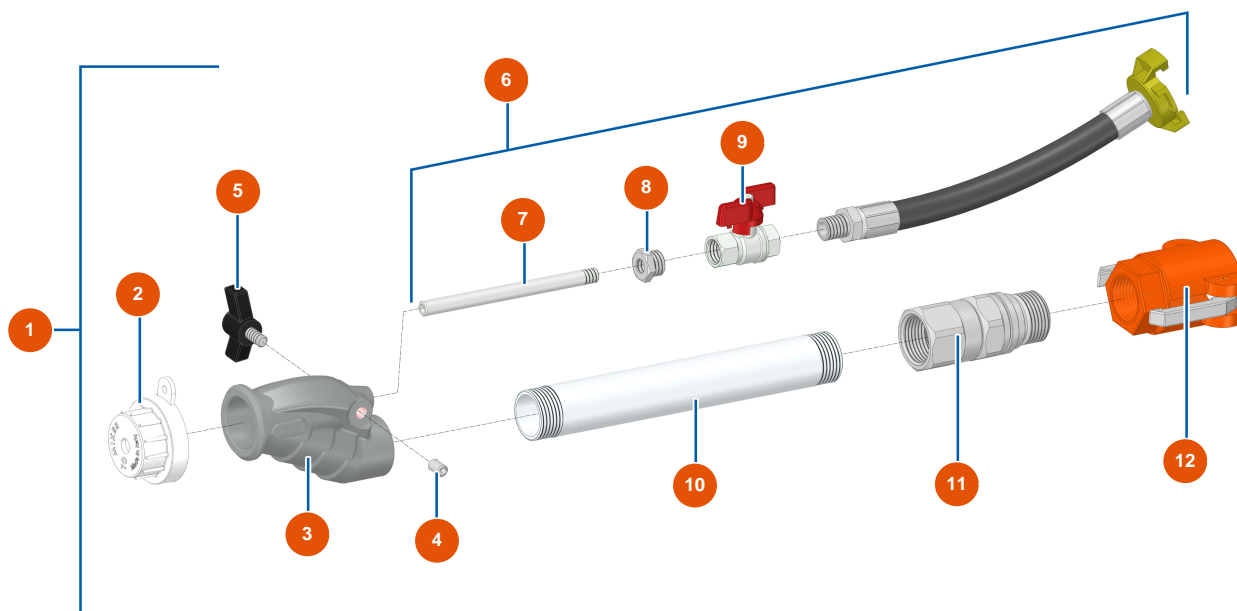


MIXER complete aluminum mortar lance with turning connector - General view



Détails des pièces

| Pos. | Référence | Désignation |
|------|------------|--|
| 1 | 8010003005 | MIXER complete aluminum mortar lance |
| 2 | 3F00200101 | Ø10 mm nozzle 80 Shore |
| 3 | 4916001000 | Body of Mixer lance |
| 4 | EU14151 | 8 x 12 stainless steel socket head screw with flat tip |
| 5 | 3T01505001 | Butterfly screw M8 x 15 |
| 6 | 8010100001 | Air regulation kit |
| 7 | 4907402000 | Little air pipe |
| 8 | 3G50300102 | Steel reduction 3/8X1/8 |
| 9 | 3G01300103 | Brass ball valve aster FF 3/8 |
| 10 | 4907441001 | Aluminium tube Ø32 x 3 - L=230 |
| 11 | 8028001007 | Aluminium turning connector 1" |
| 12 | 3A00300241 | Female camlock 25 x 1" |