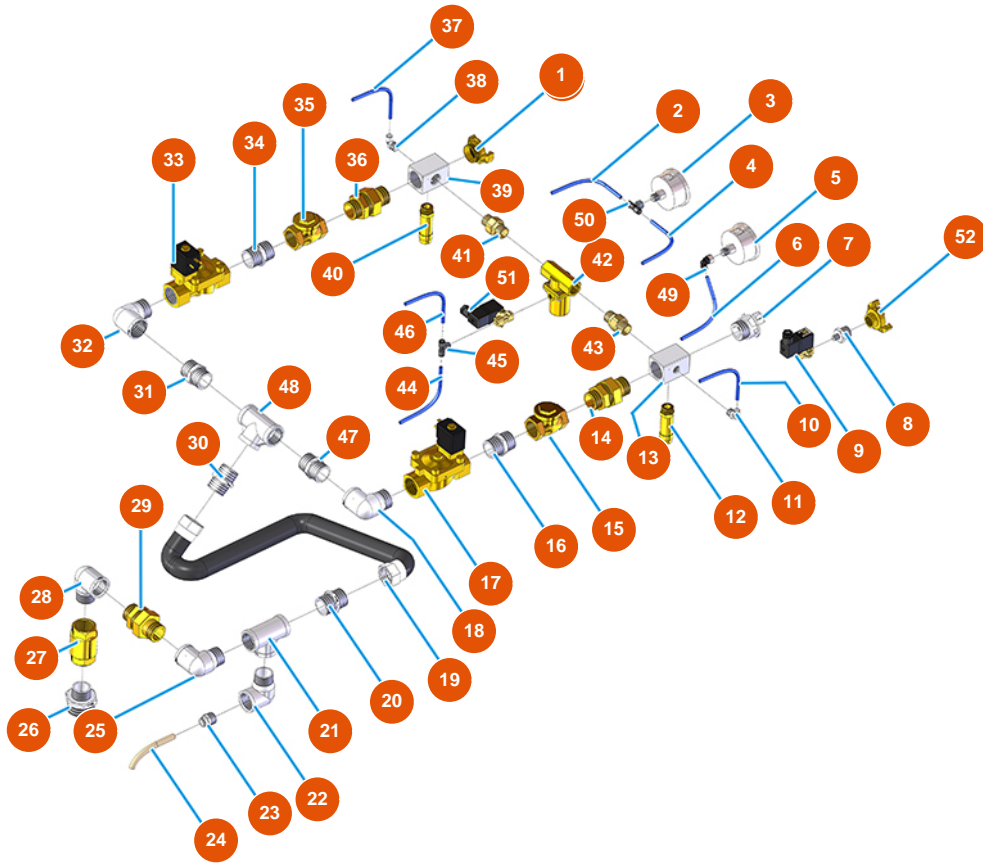


MIXER AIRTECH TOP powder conveying group - Type 140 RIETSCHLE - Air group - B



Détails des pièces

Pos.	Référence	Désignation
1	3A00100304	Male Geka coupling 1"
2	3G50500100	Hose ELASTOLLAN 6X4
3	3G00100140	Axial manometer 0-4 bar
4	3G50500100	Hose ELASTOLLAN 6X4
5	3G00100140	Axial manometer 0-4 bar
6	3G50500100	Hose ELASTOLLAN 6X4
7	3A00400105	EXPRESS connenctor M. 1
8	3G50300100	Steel reduction 1/2X1/4
9	3G01301106	Pilot for pneum. valve
10	3G50500200	Hose 12X14 RILSAN
11	3G50200200	Legris coupling elbow joint 6X1/4
12	3G01300306	Safety valve 1/2" calibrated 5 BAR

Pos.	Référence	Désignation
13	3G50301003	Joint for AIRTECH 2009
14	3G01700311	3-pieces connector M-M 1"
15	3G01300801	Valve CLAPET 1"
16	3G00528002	Galvanized nipple FIG.280 1/2
17	3G00300152	Electrovalve 1" M&M
18	3G00300152	Electrovalve 1" M&M
19	3G00509204	Elbow join galvanized 90° MF FIG.92 1"
20	8002008003	Radiator hose SPL D.25X35 L=650 with coupling
21	3G00528002	Galvanized nipple FIG.280 1/2
22	3G00513004	T-joint FFF galvanized FIG.130 1
23	3G00509204	Elbow join galvanized 90° MF FIG.92 1"
24	3G50500200	Hose 12X14 RILSAN
25	3G00509204	Elbow join galvanized 90° MF FIG.92 1"
26	3G00524106	Galvanized reduction FIG.241 1 1/4X1/2
27	3G01300404	Check valve EUROPA 1"
28	3G00509204	Elbow join galvanized 90° MF FIG.92 1"
29	3G01700311	3-pieces connector M-M 1"
30	3G00528002	Galvanized nipple FIG.280 1/2
31	3G00553030	Galvanized extension screw 1" X 60"
32	3G00509204	Elbow join galvanized 90° MF FIG.92 1"
33	3G00300152	Electrovalve 1" M&M
34	3G00528002	Galvanized nipple FIG.280 1/2
35	3G50300100	Steel reduction 1/2X1/4
36	3G01700311	3-pieces connector M-M 1"
37	3G50500100	Hose ELASTOLLAN 6X4
38	3G50200200	Legris coupling elbow joint 6X1/4
39	3G50301003	Joint for AIRTECH 2009
40	3G01300302	Safety valve 1/2" calibrated 2 BAR
41	3G01700300	3 piece connector MF (I1)
42	3G01301105	Pneum. control valve
43	3G01700300	3 piece connector MF (I1)
44	3G50500100	Hose ELASTOLLAN 6X4
45	3G50200300	Legris T - joint MFF 1/4
46	3G50500100	Hose ELASTOLLAN 6X4

Pos.	Référence	Désignation
47	3G00528002	Galvanized nipple FIG.280 1/2
48	3G00513402	T-joint FFM galvanized FIG.134 1/2
49	3G50200200	Legris coupling elbow joint 6X1/4
50	3G50200300	Legris T - joint MFF 1/4
51	3G01300702	3-ways solenoid valve 1/4 M&M
52	3A00100202	Female Geka coupling 1/2"