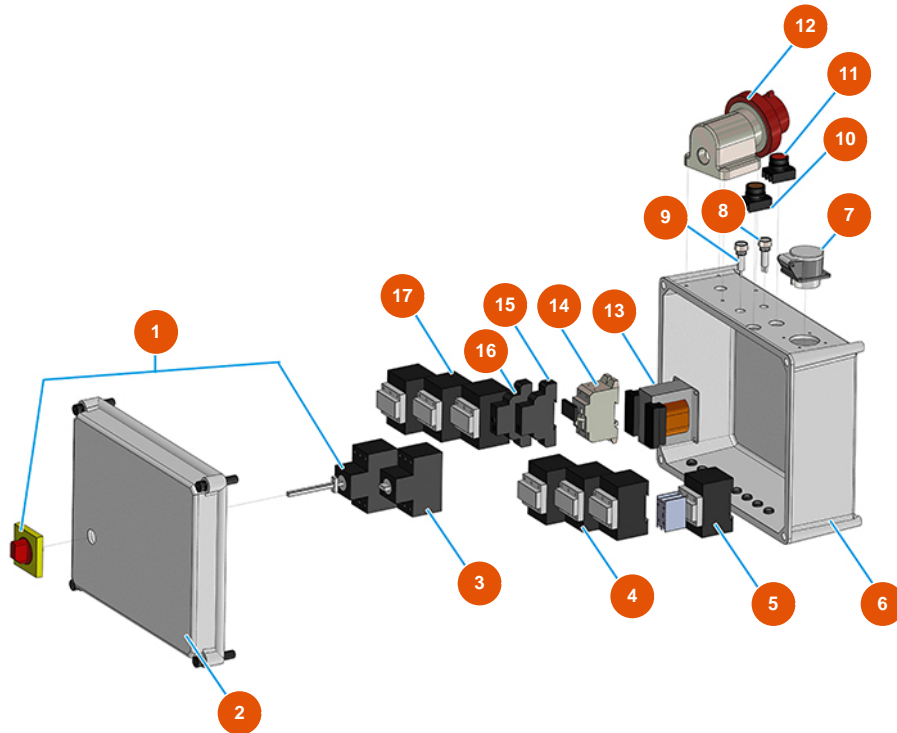


MIXER AIRTECH STANDARD powder conveying group - Type 100 RIETSCHLE - Electric panel



Détails des pièces

Pos.	Référence	Désignation
1	3C04400207	Complete phase inverter PLUS STANDARD
2	3C00110158	2
3	3C01030108	ABB-MS325 20A magnetic
4	3C00700117	Counter 4 KW 24V AC SIEMENS
5	3C00700103	Tripolar counter 4KW 42VAC 1NC
6	3C00110457	6
7	3C02600100	2-pin + ground 16A / 42V female inclined plug
8	3C04000106	Orange light indicator with cable 24V
9	3C04000109	White light indicator with cable 24V
10	3C04000105	Green button D.22
11	3C04000104	Red button D.22
12	3C03000305	3-pin + neutral + ground 32A surface-mount male plug



Pos.	Référence	Désignation
13	3C00500402	Transformer 70/80VA 400/42/24/15
14	3C05050501	Fuse holder bipolar 10,3X38
15	3C00601001	Cycle sense phase relay
16	3C03750400	Timer 2 delayed threads 24/230AC/DC
17	3C00700120	Counter 11 KW 24VAC 1NC +1NO