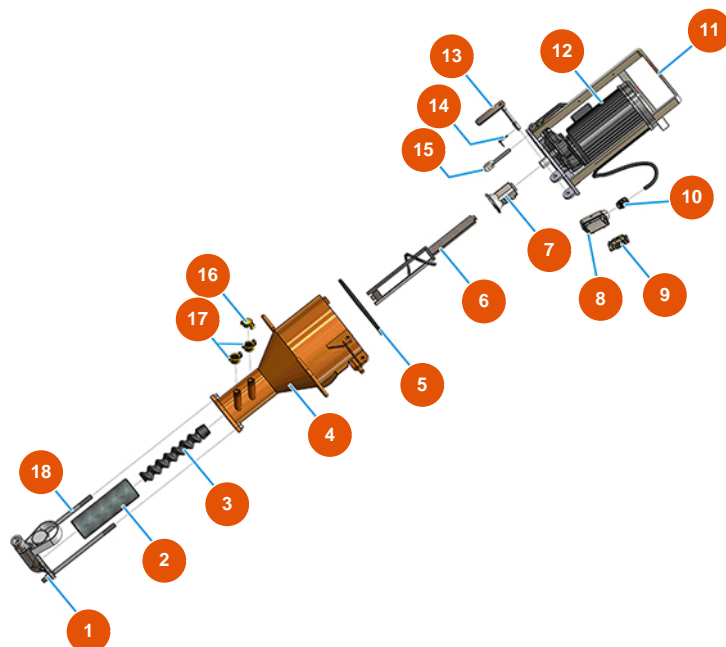


MIXER PLUS CLASSIC continuous mixing machine - 60 Hz - Pump group



Détails des pièces

Pos.	Référence	Désignation
1	8012005000	Pump flange with male coupling for MIXER PLUS, MUSTANG and REMIX
2	3F00502200	MIXER 1 straight stator - D6-3 long life
3	7009049200	MIXER 1 rotor HR
4	701400222A	Orange mixing chamber for MIXER PLUS
5	3G01000151	EPDM seal 20X15 black
6	7003019000	Mixing shaft for MIXER PLUS
7	700600600S	Motor coupling for PLUS MONO, CLASSIC, STANDARD and TOP - h=30 - Ø20
8	3C02800100	Horizontal 16-pin cover
9	3C03100400	4/2-pin 80A male insert
10	3C04200208	PG21 anti-tear cable gland
11	701100300G	Mixing chamber motor support for MIXER PLUS and SPRINTER
12	3D00420100	Mixing chamber gear motor for PLUS CLASSIC, STANDARD and TOP
13	7018006000	Mounting trunnion flange PLUS /SPRINTER

Pos.	Référence	Désignation
14	3T01200101	Split pin Ø 4,5
15	3T01000400	Galvanized threaded ring lever closing 262
16	3A00100401	Geka plug
17	3A00100203	Female Geka coupling 3/4"
18	8023003000	Tie rod M16 L = 350 F55 / 55 + screws