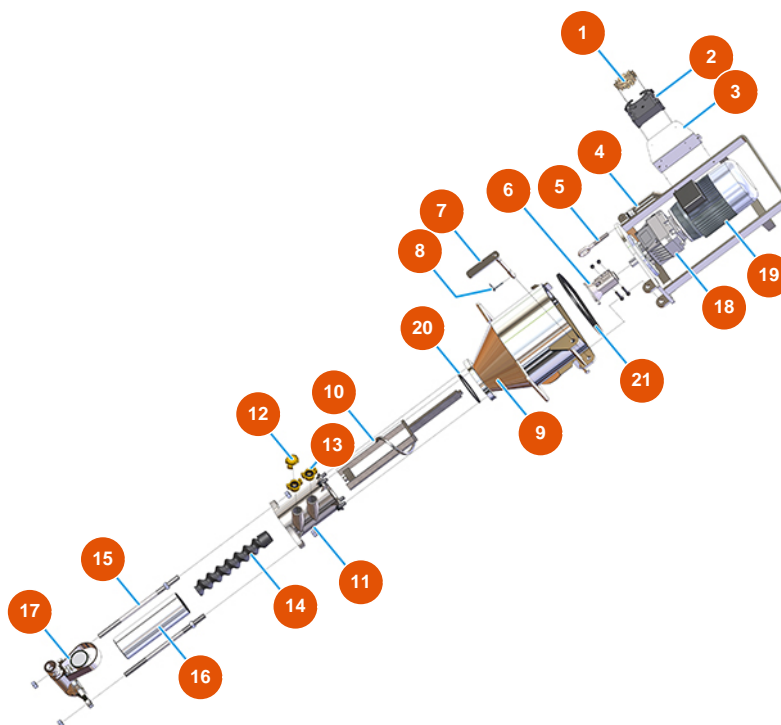


## MIXER PLUS MONO Plaster continuous mixing machine - 2,2 kW - Pump group



### Détails des pièces

Pos.	Référence	Désignation
1	3C03100400	4/2-pin 80A male insert
2	3C02800400	16-pin surface-mount cover with 2 levers
3	4906511000	Protection bent plate plug 76X83 galv.
4	701100300G	Mixing chamber motor support for MIXER PLUS and SPRINTER
5	3T01000400	Galvanized threaded ring lever closing 262
6	700600650S	Motor coupling for PLUS MONO, SPRINTER and REMIX - h=25 - Ø20
7	7018006000	Mounting trunnion flange PLUS /SPRINTER
8	3T01200101	Split pin Ø 4,5
9	701400200S	Mixing chamber for MIXER PLUS
10	7003019000	Mixing shaft for MIXER PLUS
11	7021004000	11
12	3A00100401	Geka plug
13	3A00100304	Male Geka coupling 1"

Pos.	Référence	Désignation
14	7009012000	MIXER 26 rotor
15	8023003000	Tie rod M16 L = 350 F55 / 55 + screws
16	3F00501300	MIXER 26 straight stator - D4-2
17	8012005000	Pump flange with male coupling for MIXER PLUS, MUSTANG and REMIX
18	3D00310101	Mixing chamber reducer for MIXER LIGHT, PLUS MONO, SPRINTER and CD 25
19	3D00200710	Mixing chamber three-phased 2,2 kW motor
20	3G01000301	O-ring seal for mixing chamber PLUS
21	3G01000151	EPDM seal 20X15 black