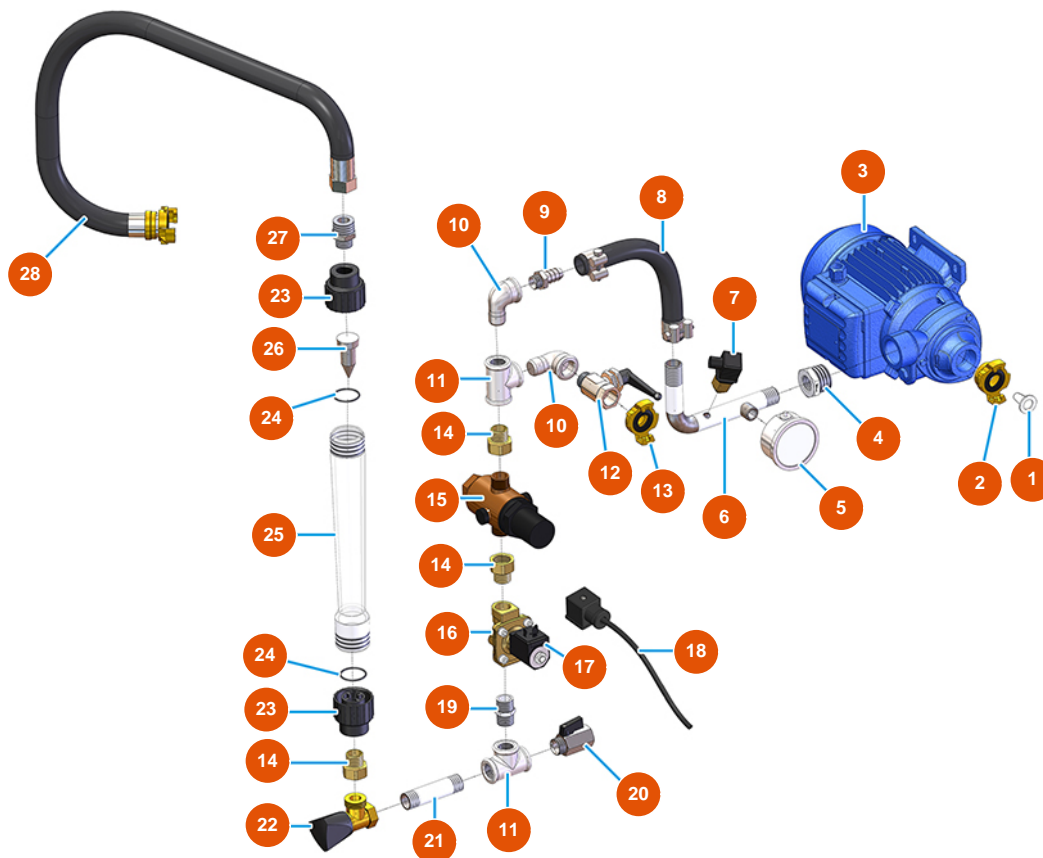


## MIXER PLUS MONO Plaster continuous mixing machine - 2,2 kW - Water group



### Détails des pièces

Pos.	Référence	Désignation
1	3A00100600	Inox water filter
2	3A00100304	Male Geka coupling 1"
3	3D00703001	Water pump for PLUS MONO and SPRINTER
4	3G00524105	Galvanized reduction FIG.241 1X1/2
5	3G00100141	Axial manometer 0-10 bar
6	7050001000	6
7	3G00402103	Water pressure switch
8	8002008002	Tube radiator SPG D.18X28 L=635 w/conn
9	3G50300201	Hose connector 1/2"X20
10	3G00509202	Elbow join galvanized 90° MF FIG.92 1/2
11	3G00513002	Galv. T-joint FIG.130 1/2
12	3G01200502	Ball valve MF 1/2 black lever
13	3A00100302	Male Geka coupling 1/2"

Pos.	Référence	Désignation
14	3G01700100	14
15	3G00904100	Pressure reducer 1/2
16	3G00301300	Electrovalve NC 1/2
17	3G00301400	Coil 24VAC
18	3G00300402	Coil connector for electrovalve
19	3G00528002	Galvanized nipple FIG.280 1/2
20	3G01200301	Ball valve MF1/2" hexagonal
21	3G00553002	Galvanized extension screw 1/2 X 80
22	3G01300201	Needle valve for MIXER 35 1/2 tap syr
23	3G01101011	PVC coupling for 75/750 - 150/1500 double scale flowmeter
24	3G01101013	O-ring seal for double scale 75/750 - 150/1500 flowmeter
25	3G01101010	75/750 - 150/1500 double scale measuring tube
26	4055000000	Dosing lead for 75/750 flowmeter
27	3G50300704	Steel reduced nipple 3/4X1/2
28	8002008002	Tube radiator SPG D.18X28 L=635 w/conn