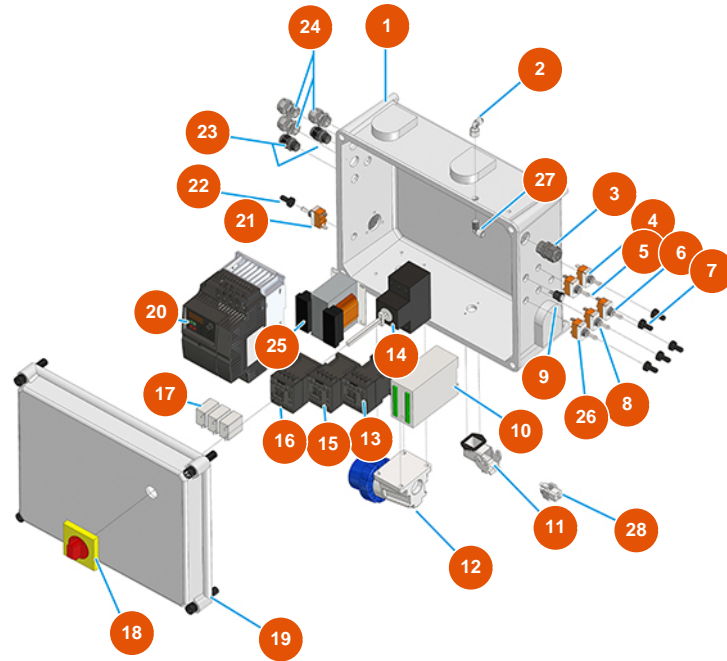


## MIXER PLUS MONO plaster continuous mixing machine - 3 kW - Electric panel



### Détails des pièces

Pos.	Référence	Désignation
1	3C00110458	1
2	3G50400201	Air connection 90GR M 1/8
3	3C04200200	PG16 anti-tear cable gland
4	3C01800500	Commutator switch 1-0 T115 A-A
5	3C01800100	Commutator switch 1-0-1 T115 E-A
6	3C01800200	Commutator switch (1)-0-(1) FASTON T115 G-A
7	3C02100100	Rubber protection for switch
8	3C01800403	Commutator switch 1-0 T215 R-A
9	8055000100	Led / led hose D.10 MM
10	3C03201590	Black box programmer for PLUS MONO
11	3C02800500	Bend socket base CK03IA
12	3C03000103	2-pin + ground 16A surface-mount male plug
13	3C00700106	Contactor ABB A8-30-10 4KW 24 VAC

Pos.	Référence	Désignation
14	3C01030108	ABB-MS325 20A magnetic
15	3C00700106	Contacteur ABB A8-30-10 4KW 24 VAC
16	3C00700106	Contacteur ABB A8-30-10 4KW 24 VAC
17	3C00500502	Transformer AMPEROM.25A R=1:200
18	3C01300207	Maneuver x ABB red/yellow IP64 MS1
19	3C00110100	19
20	3C05100155	Inverter Mini C2 3.7 kW three-phase 230V
21	3C01800100	Commutator switch 1-0-1 T115 E-A
22	3C02100100	Rubber protection for switch
23	3C04200201	PG.9 anti-tear cable gland
24	3C04200211	PG11 anti-tear cable gland
25	3C00500101	Transformer 40VA P.230 SEC.16/24V
26	3C01800200	Commutator switch (1)-0-(1) FASTON T115 G-A
27	3G50400202	Air connection 90GR F 1/8
28	3C02700200	4-pin + ground 10A female insert