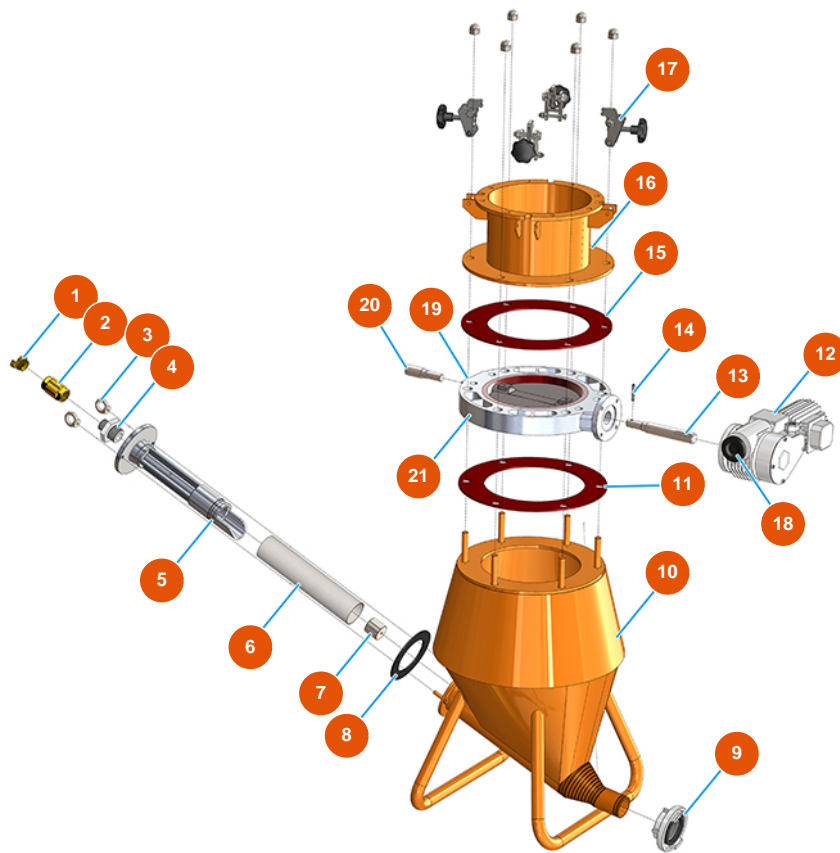


MIXER ROL 14 powder conveying group - Type 140 RIETSCHLE - Vat



Détails des pièces

Pos.	Référence	Désignation
1	3A00100304	Male Geka coupling 1"
2	3G01300404	Check valve EUROPA 1"
3	3T01100202	Galvanized eyebolt F 10
4	3G00524506	Galvanized reduced nipple FIG.245 1"1/4X1"
5	4003005000	Injector nozzle chromed
6	3G00800101	Cloth bag for MK800 PT 11 bag filter
7	4003006000	Injector nozzle chromed
8	4920002000	Rubber seal injet.160x105x5 w/holes
9	3A00200100	Female Storz coupling 2"
10	702200100A	ROL 14 vat
11	4920007000	Rubber / canvas gasket V/A/C 390X265X5
12	3D00600101	Actuator SM63 SR92 A63 1/300
13	4922009000	Drive shaft D.28x200 with slot x disc



Pos.	Référence	Désignation
14	3T02405001	Conical threaded pin m8 L = 60
15	4920007000	Rubber / canvas gasket V/A/C 390X265X5
16	702900100A	ROL silo attachment collar 14
17	7023003000	Complete ROL 14 amphora hook
18	3D50400101	Actuator handwheel A63
19	4003026000	Body aluminum butterfly valve w/gasket
20	4922008000	Support shaft D.28x109
21	4003022000	Valve disk cast iron GS500