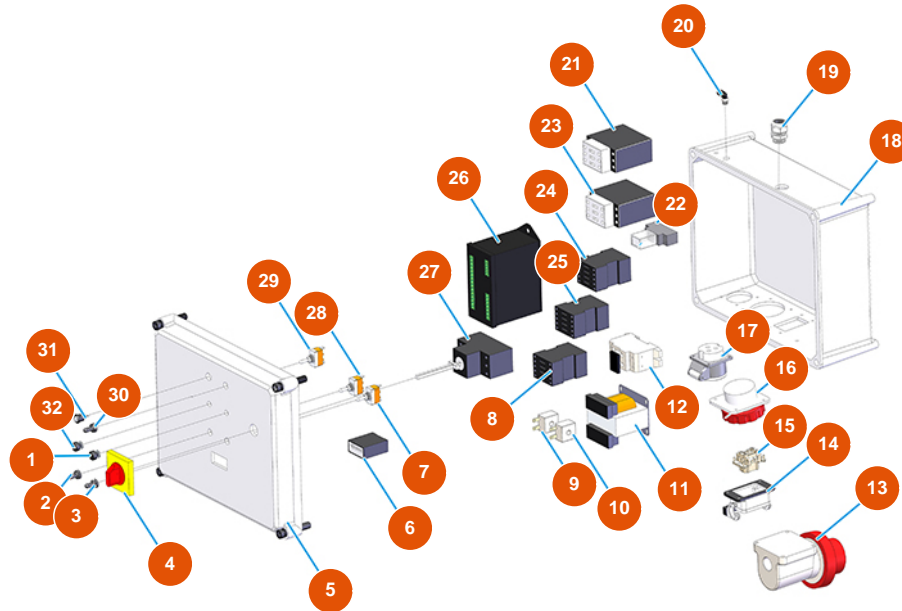


MIXER ROL 14 powder conveying group - Type 140 RIETSCHLE - Electric panel



Détails des pièces

Pos.	Référence	Désignation
1	3C00300100	Potentiometer SFERNICE P16NP-4K7
2	3C02100100	Rubber protection for switch
3	3C02100100	Rubber protection for switch
4	3C01300207	Maneuver x ABB red/yellow IP64 MS1
5	3C00110155	5
6	3C02300200	Hour counter 24V AC 50HZ TH634
7	3C01801000	Commutator switch 1-0 T115 F-A
8	3C00700107	Contacteur ABB A8-30-01 4KW
9	3C00500502	Transformer AMPEROM.25A R=1:200
10	3C00500503	Transformer AMPEROM.25A R=1:400
11	3C00500402	Transformer 70/80VA 400/42/24/15
12	3C05050800	Fuse holder 5X20 PHONIX UK5-HESIL
13	3C03000305	3-pin + neutral + ground 32A surface-mount male plug

Pos.	Référence	Désignation
14	3C02800300	6-pin socket base 1 lever for VERTIGO trowel
15	3C02700300	6-pin 16A female insert
16	3C02600203	3-pin+gr female inclined plug 16A GW 62231
17	3C02600100	2-pin + ground 16A / 42V female inclined plug
18	3C00110453	18
19	3C04200201	PG.9 anti-tear cable gland
20	3G50400201	Air connection 90GR M 1/8
21	3C00700203	Contacteur ABB A26-30-10 11 KW
22	3C00600900	Relay 2SC 48 VAC FINDER
23	3C00700203	Contacteur ABB A26-30-10 11 KW
24	3C00700107	Contacteur ABB A8-30-01 4KW
25	3C00700107	Contacteur ABB A8-30-01 4KW
26	3C03201610	Black box programmer for ROL 14
27	3C01030108	ABB-MS325 20A magnetic
28	3C01801000	Commutator switch 1-0 T115 F-A
29	3C01800200	Commutator switch (1)-0-(1) FASTON T115 G-A
30	3C02100100	Rubber protection for switch
31	8055000100	Led / led hose D.10 MM
32	3C00300100	Potentiometer SFERNICE P16NP-4K7