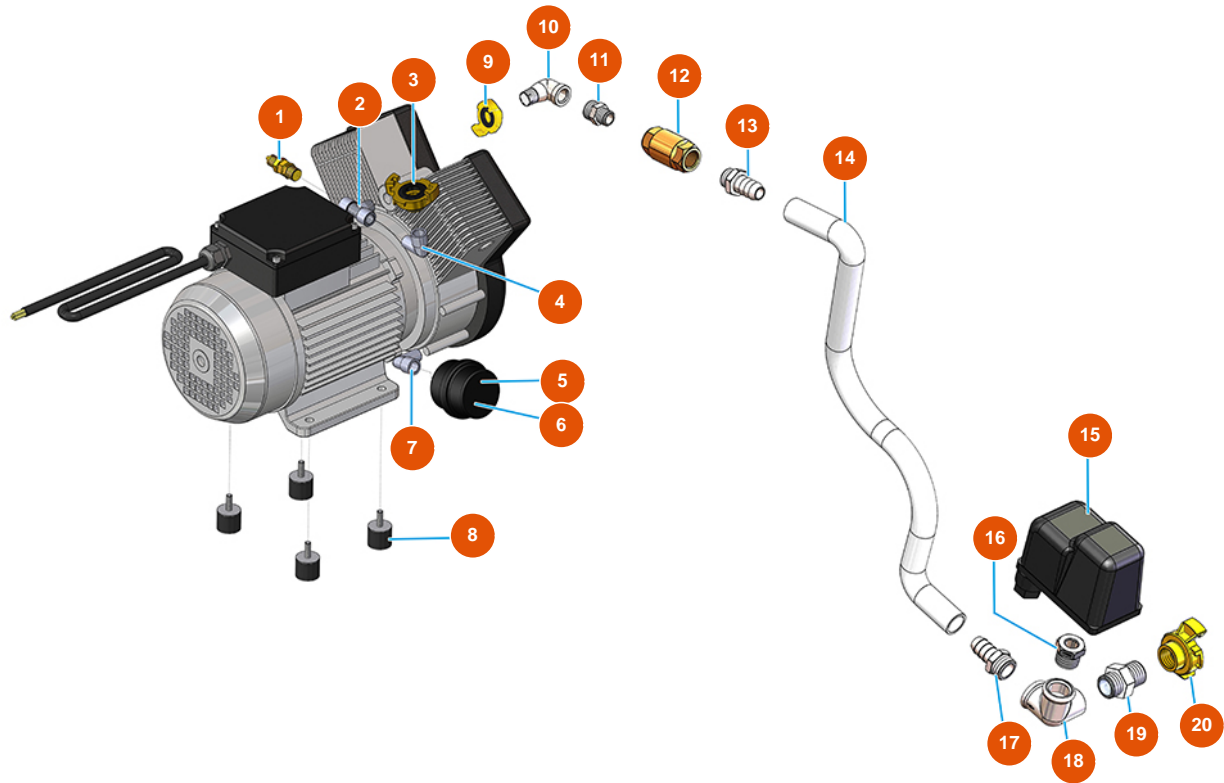


OPTIMIX 20 spraying machine - 5,5 kW - Air group



Détails des pièces

Pos.	Référence	Désignation
1	3G01300304	Safety valve 1/4" TAR.3 BAR
2	3G50300804	T - joint FMF steel 3/8
3	3A00100301	Male Geka coupling 3/8"
4	3B02610000	2 head compressor 1.5HP 380V 50HZ
5	3B02620000	Cartridge filter holder
6	3B02620010	Filter cartridge
7	3G50300500	Stainless steel elbow joint MF 1/4"
8	3T00200402	Rubber antivibration MM M8 D30 X H40 M8X23
9	3A00100201	Female Geka coupling 3/8"
10	3G00504001	Elbow join galvanized 45° MF FIG.40 1/2"
11	3G50300700	Steel reduced nipple 1/2X3/8
12	3G01300401	Valve RITEGNO EUROPA 3/8"
13	3G50300202	Hose connector 3/8"X14"

Pos.	Référence	Désignation
14	3F00700201	PVC/rubber hose 13x19 (without Geka)
15	3G50300100	Steel reduction 1/2X1/4
16	3G00403106	Pressure switch PT/5 0,6-2 BAR ITALT
17	3A00100202	Female Geka coupling 1/2"
18	3G00528002	Galvanized nipple FIG.280 1/2
19	3G00513002	Galv. T-joint FIG.130 1/2
20	3G50300202	Hose connector 3/8"X14"