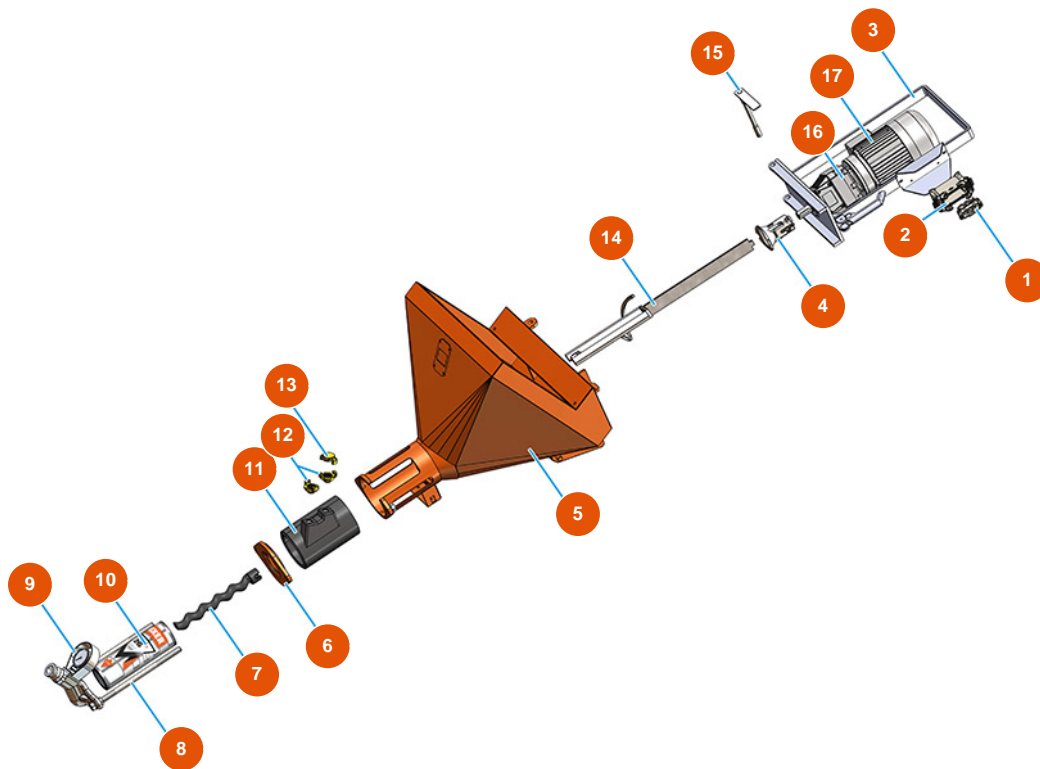


MIXER LIGHT E.W.I. continuous mixing machine - Mixing group



Détails des pièces

Pos.	Référence	Désignation
1	3C03100400	4/2-pin 80A male insert
2	3C02800400	16-pin surface-mount cover with 2 levers
3	701101400G	Motor support for MIXER LIGHT
4	700600650S	Motor coupling for PLUS MONO, SPRINTER and REMIX - h=25 - Ø20
5	701202910A	5
6	400210230A	Support for mixing chamber MIXER PLUS vers. 2020
7	7009049700	MIXER 13 rotor
8	8023003000	Tie rod M16 L = 350 F55 / 55 + screws
9	8012006000	Pump flange for SPRINTER and LIGHT
10	3F00503000	MIXER 13 straight stator - D4-3 / D4-1/2
11	4002103000	Polyurethane mixing chamber for MIXER PLUS and SPRINTER vers. 2020
12	3A00100401	Geka plug
13	3A00100303	Male Geka coupling 3/4"

Pos.	Référence	Désignation
14	7003027000	Mixing shaft for MIXER LIGHT
15	7018008000	Mounting trunnion flange LIGHT 2013
16	3D00310101	Mixing chamber reducer for MIXER LIGHT, PLUS MONO, SPRINTER and CD 25
17	3D00200710	Mixing chamber three-phased 2,2 kW motor