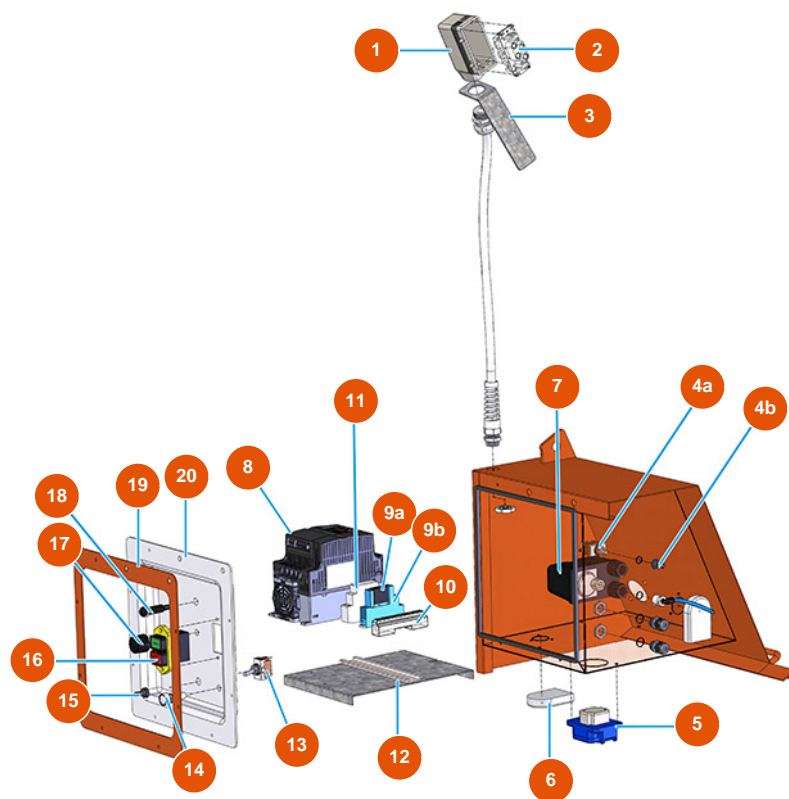


MIXER LIGHT plaster continuous mixing machine - 2,2 kW - Electric panel



Détails des pièces

| Pos. | Référence | Désignation |
|------|------------|--|
| 1 | 3C02800100 | Horizontal 16-pin cover |
| 2 | 3C02700600 | 4/2-pin 80A female insert |
| 3 | 4906512000 | Plate 40X190 support plug ILME |
| 4a | 3C01800402 | Lever commutator switch T315N-A ON-ON |
| 4b | 3C02100100 | Rubber protection for switch |
| 5 | 3C02601001 | Interlocking socket SCHUKO PALAZZOLI |
| 6 | 3C00130101 | Basic ventilation kit APO 71 (2 PE) |
| 7 | 3G00403106 | Pressure switch PT/5 0,6-2 BAR ITALT |
| 8 | 3C05100107 | Mono inverter 230V 2,2Kw MOSQUITO/PLUS |
| 9a | 3C00600800 | Relay 2SC JW2 SN 24VDC |
| 9b | 3C00600904 | Relay socket FINDER 95.05 SPA |
| 10 | 3C00400700 | 10-way ground clamp |
| 11 | 3C00600210 | Relay 22.32.0.230.4340 FINDER |

| Pos. | Référence | Désignation |
|------|------------|----------------------------------|
| 12 | 4044002400 | 12 |
| 13 | 3C01800800 | Commutator switch 1-0-1 T215 T-A |
| 14 | 3C02400900 | White light alarm 230V SIGNALUX |
| 15 | 3C02100100 | Rubber protection for switch |
| 16 | 3C01403000 | Bipolar switch 230V |
| 17 | 3C00300101 | Simple linear potentiometer 5K |
| 18 | 3M00500121 | Water pump button |
| 19 | 404400280A | Control panel frame LIGHT |
| 20 | 4044001200 | Control panel cover LIGHT 2013 |