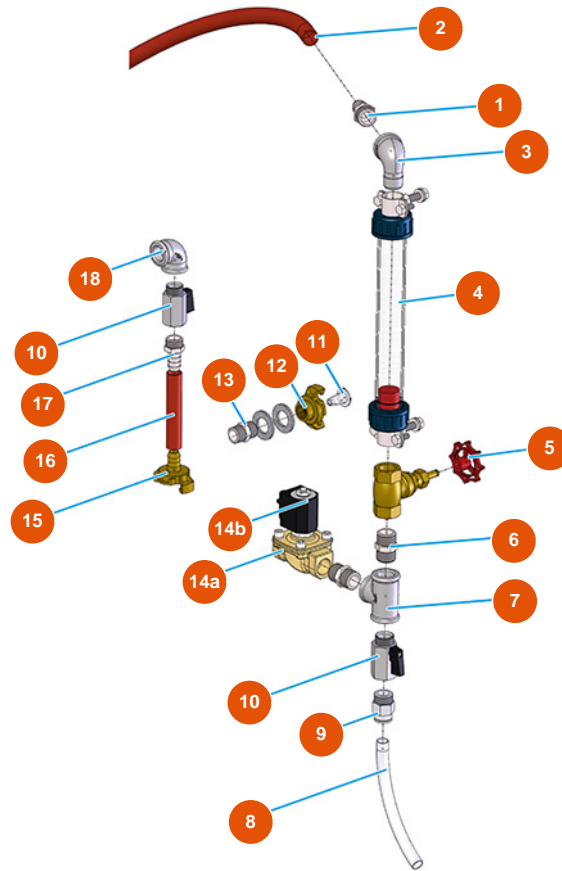


MIXER LIGHT plaster continuous mixing machine - 3 kW - Water group



Détails des pièces

Pos.	Référence	Désignation
1	3G50300200	Hose connector 1/2"X14"
2	3F00700201	PVC/rubber hose 13x19 (without Geka)
3	3G00509202	Elbow join galvanized 90° MF FIG.92 1/2"
4	3G01101001	60-600 L/h flowmeter
5	3G01300211	Needle adjustment valve 1/4"
6	3G00528002	Galvanized nipple FIG.280 1/2
7	3G00513002	Galv. T-joint FIG.130 1/2
8	3G50500200	Hose 12X14 RILSAN
9	3G50200101	Legris joint straight 1/2X14 3175
10	3G01200301	Ball valve MF1/2" hexagonal
11	3A00100600	Inox water filter
12	3A00100202	Female Geka coupling 1/2"
13	3G00528002	Galvanized nipple FIG.280 1/2

Pos.	Référence	Désignation
14a	3G00301300	Electrovalve NC 1/2
14b	3G00301401	Coil 230VAC
15	3A00100102	PG15 Geka coupling 1/2"
16	3F00700201	PVC/rubber hose 13x19 (without Geka)
17	3G50300200	Hose connector 1/2"X14"
18	3G00509002	Elbow join galvanized 90° FF FIG.90 1/2"