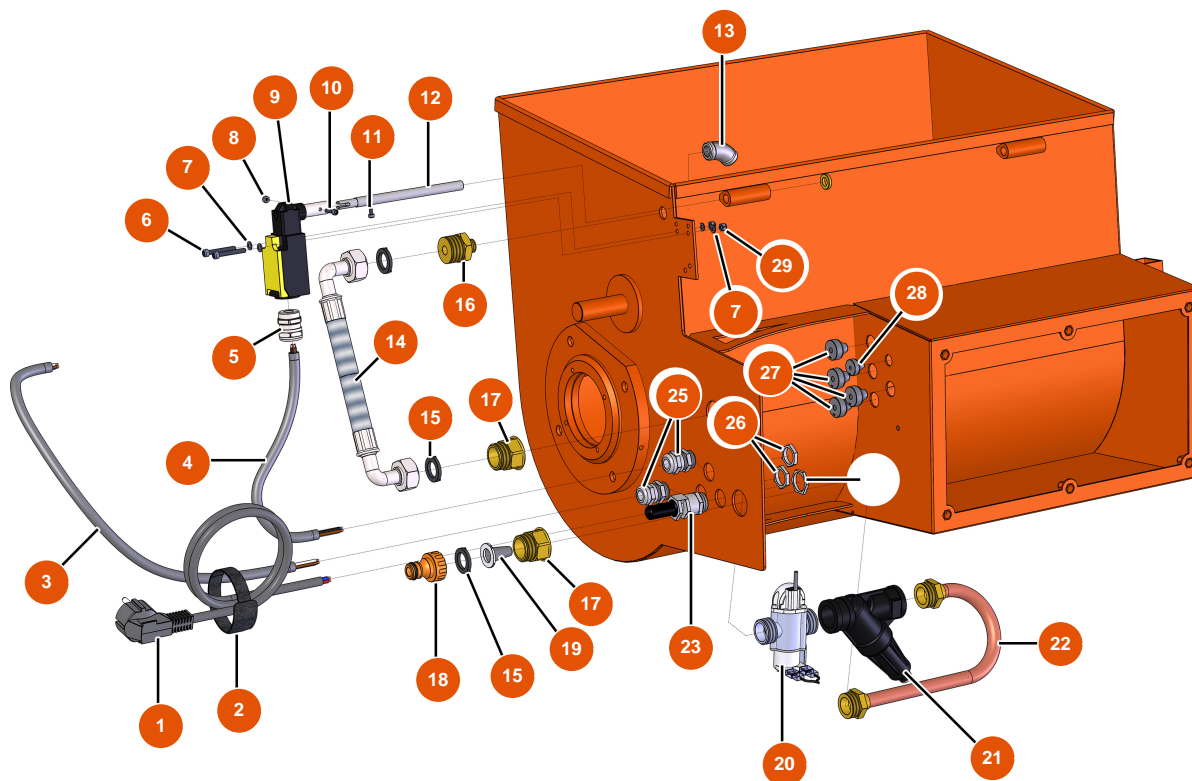


Sequenzieller Mischer MIXER 80 - Hydraulikkreislauf



Détails des pièces

| Pos. | Référence | Désignation |
|------|-----------|----------------------------|
| 1 | EU90180 | 1 |
| 2 | EU12410 | 2 |
| 3 | EU90606 | 3 |
| 4 | EU30018 | 4 |
| 5 | EU80448 | 5 |
| 6 | EU11882 | 6 |
| 7 | EU30267 | 7 |
| 8 | EU12737 | 8 |
| 9 | EU12742 | 9 |
| 10 | EU12250 | 10 |
| 11 | EU13329 | Zylinderkopfschraube 3 x 6 |
| 12 | EU11500 | 12 |
| 13 | EU12104 | 13 |

| Pos. | Référence | Désignation |
|------|-----------|-------------|
| 14 | EU12642 | 14 |
| 15 | EU11618 | 15 |
| 16 | EU12640 | 16 |
| 17 | EU12562 | 17 |
| 18 | EU80124 | 18 |
| 19 | EU80128 | 19 |
| 20 | EU12341 | 20 |
| 21 | EU12066 | 21 |
| 22 | EUC20583 | 22 |
| 23 | EU80450 | 23 |
| 25 | EU30040 | 25 |
| 26 | EU30333 | 26 |
| 27 | EU11564 | 27 |
| 28 | EU11563 | 28 |
| 29 | EU30266 | 29 |