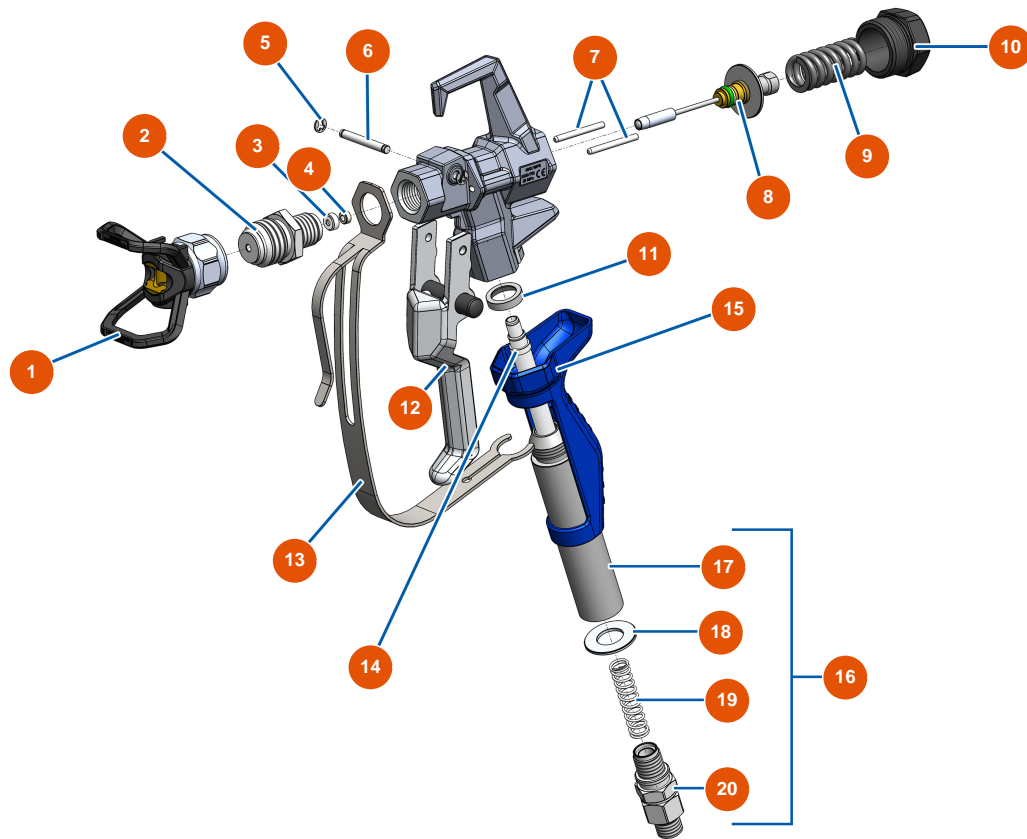


EUROSPRAY S Mini airless piston pump - Spray-gun



Détails des pièces

| Pos. | Référence | Désignation |
|------|-----------|--|
| 1 | EU51001 | EUBST, EUBBP & EUBFF 7/8" nozzle-holder |
| 2 | EU51036 | PAINTSPRAY spray-gun 7/8" diffuser |
| 3 | EU51047 | PAINTSPRAY, COATSPRAY spray-gun needle seat gasket |
| 4 | EU51046 | PAINTSPRAY, COATSPRAY spray-gun needle seat |
| 5 | EU51043 | PAINTSPRAY, COATSPRAY spray-gun trigger axis circlip |
| 6 | EU51042 | PAINTSPRAY spray-gun trigger axis |
| 7 | EU51040 | PAINTSPRAY spray-gun retraction pin |
| 8 | EU51033 | PAINTSPRAY spray-gun needle repair kit |
| 9 | EU51034 | PAINTSPRAY,COATSPRAY spray-gun needle return spring |
| 10 | EU51038 | PAINTSPRAY, COATSPRAY spray-gun needle lock plug |
| 11 | EU51031 | PAINTSPRAY spray-gun filter holder bearing gasket |
| 12 | EU51039 | PAINTSPRAY spray-gun complete trigger |
| 13 | EU51032 | PAINTSPRAY spray-gun trigger protection |



| Pos. | Référence | Désignation |
|------|-----------|---|
| 14 | EU51003 | Spray-gun grip 50-mesh filter |
| 15 | EU51037 | PAINTSPRAY spray-gun plastic handle |
| 16 | EU51048 | Complete revolving coupling for PAINTSPRAY spray-gun |
| 17 | EU51035 | PAINTSPRAY spray-gun filter holder |
| 18 | EU51045 | PAINTSPRAY, COATSPRAY spray-gun revolving coupling gasket |
| 19 | EU51041 | PAINTSPRAY spray-gun filter holding spring |
| 20 | EU51044 | 1/4" MBSP revolving coupling for PAINTSPRAY spray-gun |