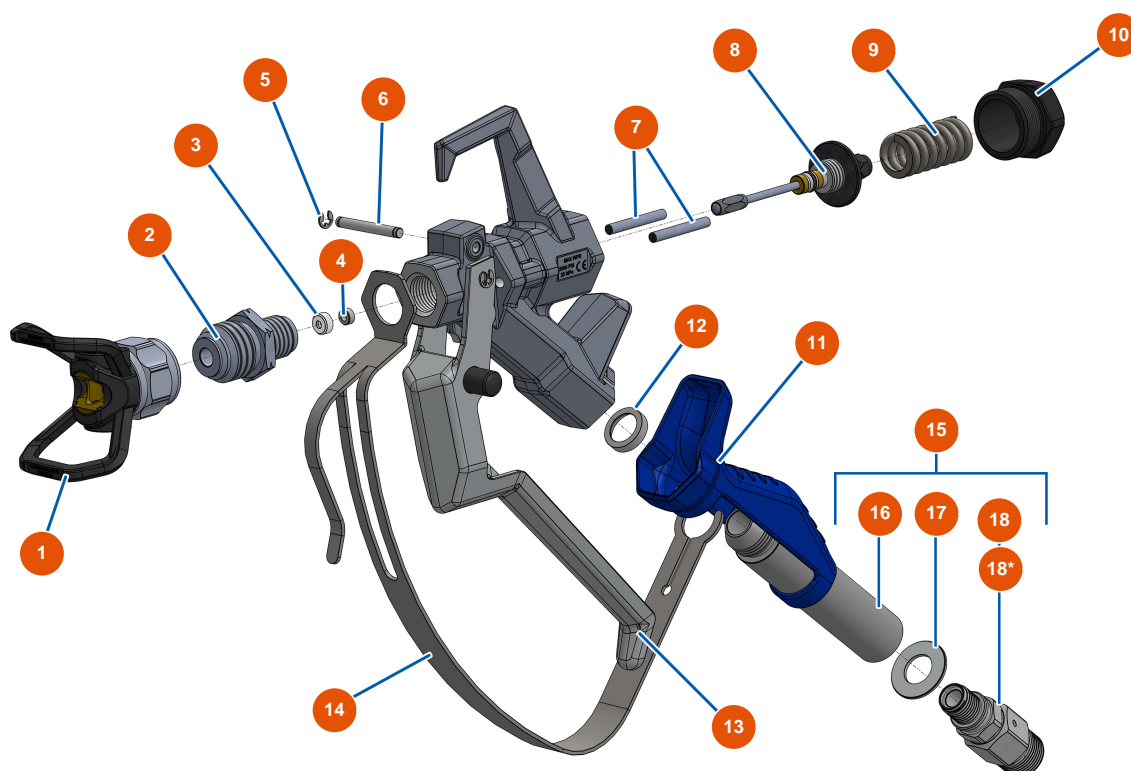


EUROSPRAY XL airless piston pump - COATSPRAY Spray-gun



**Raccord renforcé optionnel / Optional reinforced connector*

Détails des pièces

Pos.	Référence	Désignation
1	EU51001	EUBST, EUBBP & EUBFF 7/8" nozzle-holder
2	EU51054	COATSPRAY spray-gun 7/8" diffuser
3	EU51047	PAINTSPRAY, COATSPRAY spray-gun needle seat gasket
4	EU51046	PAINTSPRAY, COATSPRAY spray-gun needle seat
5	EU51043	PAINTSPRAY, COATSPRAY spray-gun trigger axis circlip
6	EU51057	COATSPRAY spray-gun trigger axis
7	EU51055	COATSPRAY spray-gun retraction pin
8	EU51053	COATSPRAY spray-gun needle repair kit
9	EU51034	PAINTSPRAY, COATSPRAY spray-gun needle return spring
10	EU51038	PAINTSPRAY, COATSPRAY spray-gun needle lock plug
11	EU51037	PAINTSPRAY spray-gun plastic handle
12	EU51051	COATSPRAY spray-gun filter holder bearing gasket
13	EU51056	COATSPRAY spray-gun complete trigger

Pos.	Référence	Désignation
14	EU51052	COATSPRAY spray-gun trigger protection
15	EU51059	Complete revolving coupling for COATSPRAY spray-gun
16	EU51035	PAINTSPRAY spray-gun filter holder
17	EU51045	PAINTSPRAY, COATSPRAY spray-gun revolving coupling gasket
18	EU51058	1/2" MBSP revolving coupling for COATSPRAY spray-gun
18*	EUM07057	Reinforced turning connector for COATSPRAY spray-gun