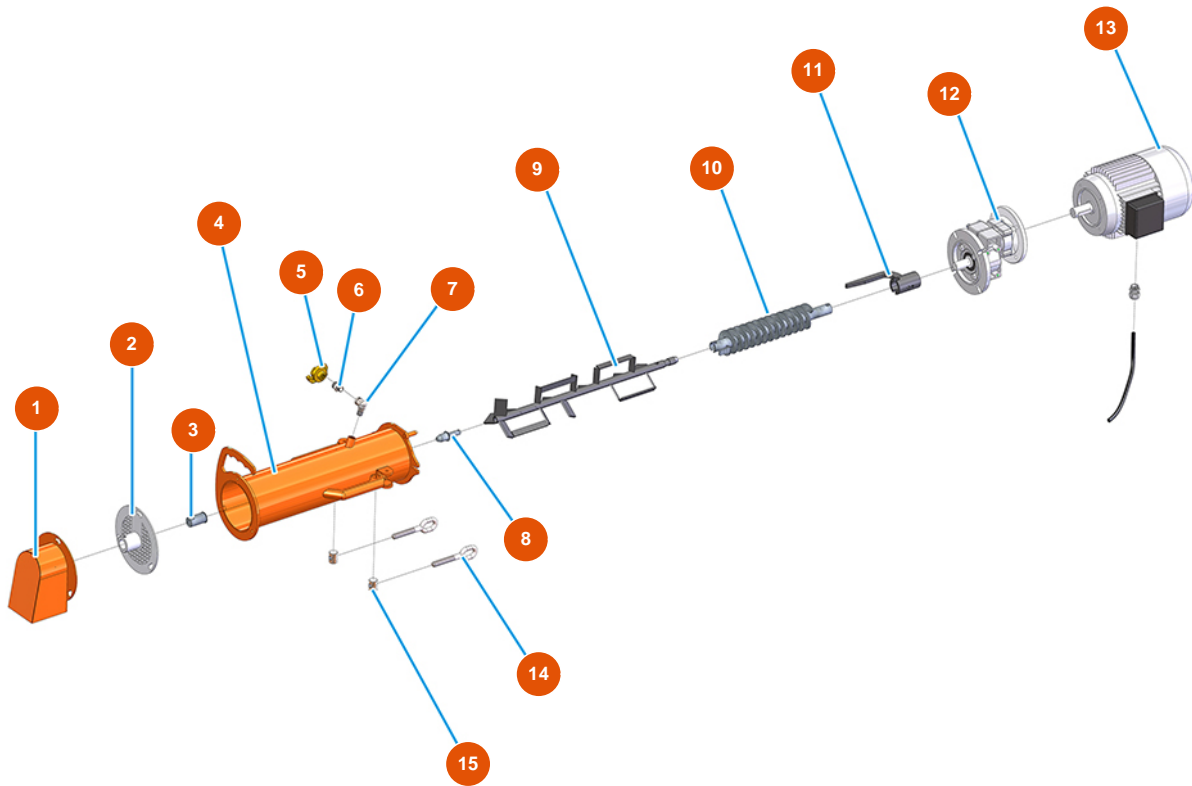


MIXER 35 BASIC continuous mixer for adhesive - Mixing Group



Détails des pièces

Pos.	Référence	Désignation
1	701100790G	Flange for mortar for MIXER 35 BASIC
2	701702010G	Flange for adhesives for MIXER 35 BASIC
3	4905002100	Hardened bush flange MIXER 35
4	701400260G	Mixing chamber frame for MIXER 35 Basic vers. 2020
5	3A00100201	Female Geka coupling 3/8"
6	3G50300110	Steel reduction 3/8"-1/4"
7	3G50300400	Stainless steel elbow joint MM 1/4"
8	4001006100	Pivot for mixing shaft MIXER 35 hardened
9	7005001000	Pastrous products mixing axis for MIXER 35
10	7004015100	Powder dosing screw for MIXER 35 6 LT vers. 2020
11	7006018000	Motor coupling for MIXER 35 vers. 2020
12	3D00310400	Reducer for MIXER 35
13	3D00201000	MIXER 35 motor



Pos.	Référence	Désignation
14	3T01000400	Galvanized threaded ring lever closing 262
15	3T01000500	Spyralized galvanized lever locking 262