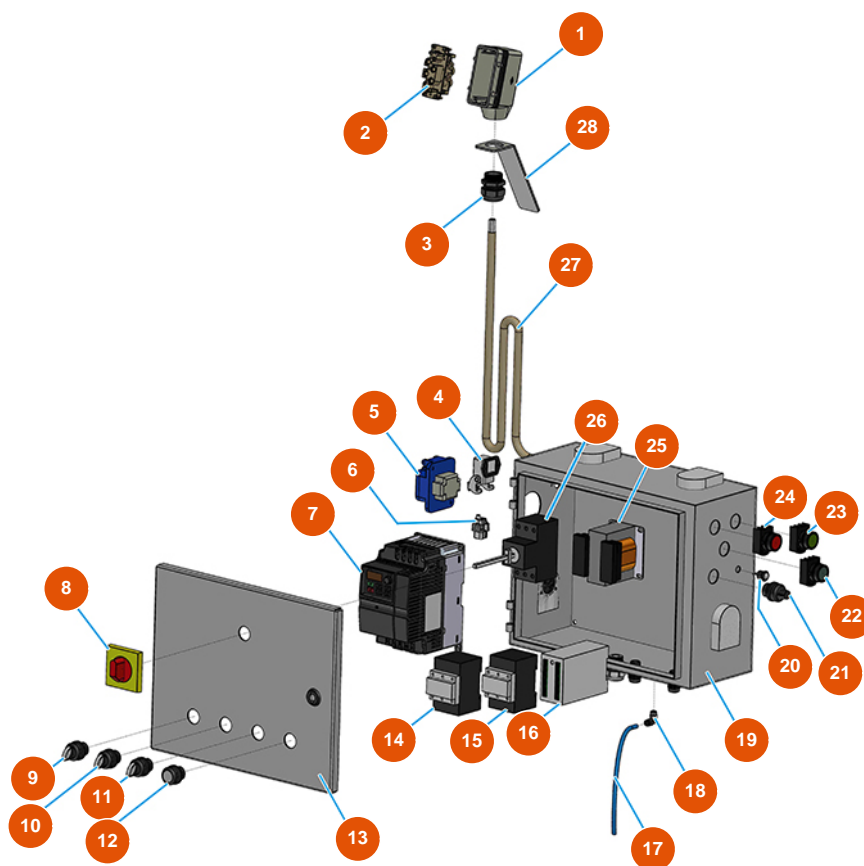


MIXER SPRINTER E.W.I. continuous mixing machine - Electric panel - vers. 2021



Détails des pièces

Pos.	Référence	Désignation
1	3C02800100	Horizontal 16-pin cover
2	3C02700600	4/2-pin 80A female insert
3	3C04200200	PG16 anti-tear cable gland
4	3C02800500	Bend socket base CK03IA
5	3C02601001	Interlocking socket SCHUKO PALAZZOLI
6	3C02700200	4-pin + ground 10A female insert
7	3C05100107	Mono inverter 230V 2,2Kw MOSQUITO/PLUS
8	3C01300207	Maneuver x ABB red/yellow IP64 MS1
9	3C01403110	2-position switch
10	3C01403110	2-position switch
11	3C01403100	3-position switch
12	3C04000120	White button

Pos.	Référence	Désignation
13	3C00107100	13
14	3C00700117	Counter 4 KW 24V AC SIEMENS
15	3C00700117	Counter 4 KW 24V AC SIEMENS
16	3C03202500	Black box programmer SPRINTER
17	3G50500100	Hose ELASTOLLAN 6X4
18	3G50400202	Air connection 90GR F 1/8
19	3C00107100	19
20	8055000100	Led / led hose D.10 MM
21	3C00300400	Potentiometer 4,7 K-OHM
22	3C04000118	Blue button D.22
23	3C04000105	Green button D.22
24	3C04000104	Red button D.22
25	3C00500101	Transformer 40VA P.230 SEC.16/24V
26	3C01030108	ABB-MS325 20A magnetic
27	3C03900008	CVVF 18BR 7x2.5 electric cable
28	4906512000	Plate 40X190 support plug ILME