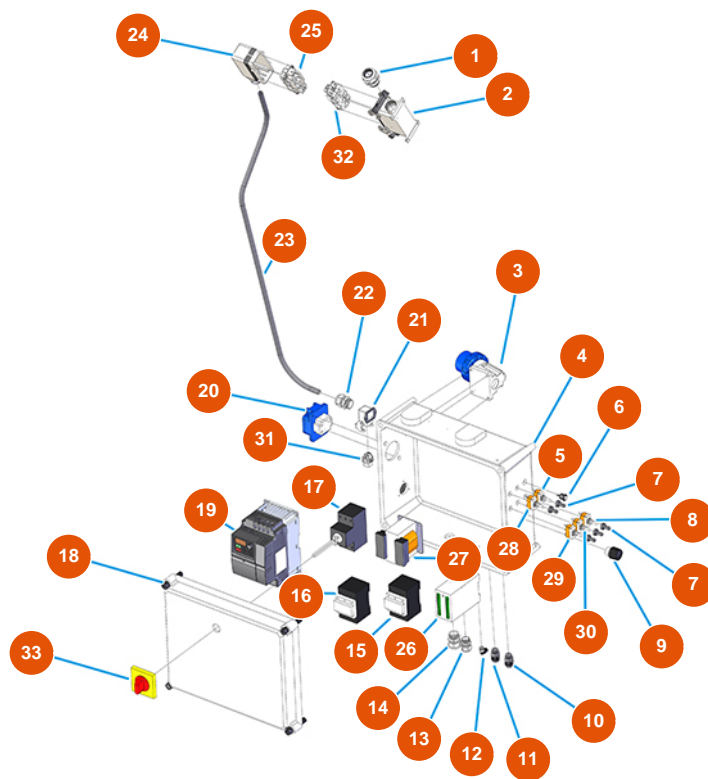


MIXER SPRINTER E.W.I. continuous mixing machine - Electric panel (until 12/2020)



Détails des pièces

| Pos. | Référence | Désignation |
|------|------------|---|
| 1 | 3C04200208 | PG21 anti-tear cable gland |
| 2 | 3C02800400 | 16-pin surface-mount cover with 2 levers |
| 3 | 3C03000103 | 2-pin + ground 16A surface-mount male plug |
| 4 | 3C00110464 | 4 |
| 5 | 3C01801000 | Commutator switch 1-0 T115 F-A |
| 6 | 8055000100 | Led / led hose D.10 MM |
| 7 | 3C02100100 | Rubber protection for switch |
| 8 | 3C01800200 | Commutator switch (1)-0-(1) FASTON T115 G-A |
| 9 | 3C00300101 | Simple linear potentiometer 5K |
| 10 | 3C04200201 | PG.9 anti-tear cable gland |
| 11 | 3C04200201 | PG.9 anti-tear cable gland |
| 12 | 3G50200201 | Legris coupling elbow joint 6X1/8 M |
| 13 | 3C04200205 | 13 |

| Pos. | Référence | Désignation |
|------|------------|--|
| 14 | 3C04200206 | 14 |
| 15 | 3C00700110 | 15 |
| 16 | 3C00700117 | Counter 4 KW 24V AC SIEMENS |
| 17 | 3C01030108 | ABB-MS325 20A magnetic |
| 18 | 3C00110163 | 18 |
| 19 | 3C05100107 | Mono inverter 230V 2,2Kw MOSQUITO/PLUS |
| 20 | 3C02601001 | Interlocking socket SCHUKO PALAZZOLI |
| 21 | 3C02800500 | Bend socket base CK03IA |
| 22 | 3C04200206 | 22 |
| 23 | 3C03900008 | CVVF 18BR 7x2.5 electric cable |
| 24 | 3C02800100 | Horizontal 16-pin cover |
| 25 | 3C02700600 | 4/2-pin 80A female insert |
| 26 | 3C03202500 | Black box programmer SPRINTER |
| 27 | 3C00500101 | Transformer 40VA P.230 SEC.16/24V |
| 28 | 3C01800402 | Lever commutator switch T315N-A ON-ON |
| 29 | 3C01800500 | Commutator switch 1-0 T115 A-A |
| 30 | 3C01800100 | Commutator switch 1-0-1 T115 E-A |
| 31 | 3C02700200 | 4-pin + ground 10A female insert |
| 32 | 3C03100400 | 4/2-pin 80A male insert |
| 33 | 3C01300207 | Maneuver x ABB red/yellow IP64 MS1 |