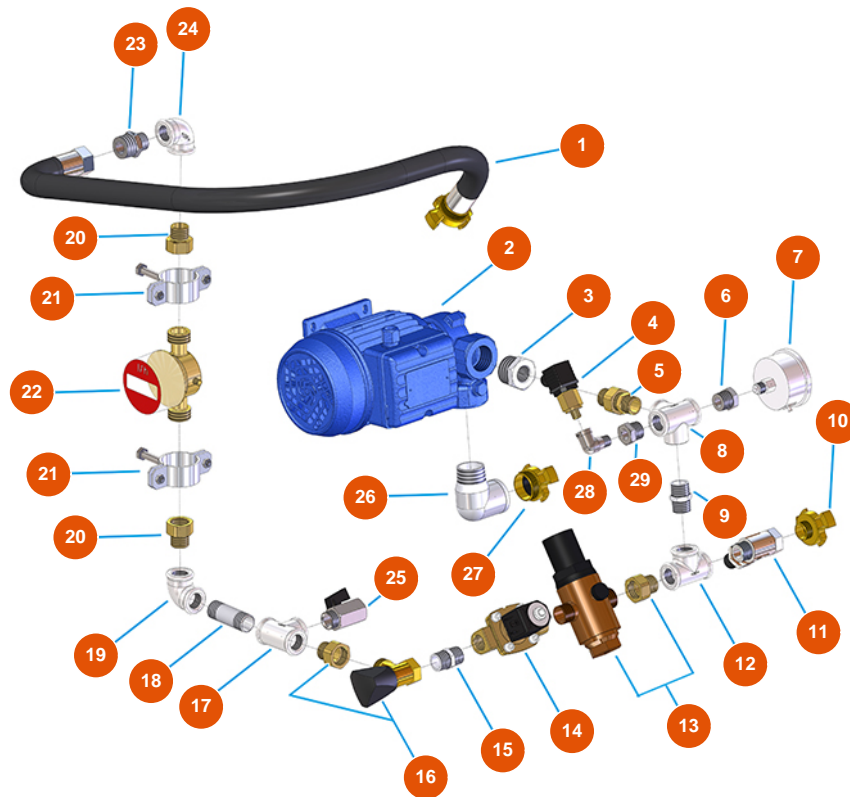


## MIXER SPRINTER mortar continuous mixing machine - 2,2 kW - Water group



### Détails des pièces

Pos.	Référence	Désignation
1	8002008004	Radiator hose SPG Ø 18X28 L=700 with coupling
2	3D00703001	Water pump for PLUS MONO and SPRINTER
3	3G00524105	Galvanized reduction FIG.241 1X1/2
4	3G00402103	Water pressure switch
5	3G50301201	3-pieces connector M-M OR 1/2-1/2 FIG.7
6	3G50300101	Steel reduction 1/4X1/8
7	3G00100141	Axial manometer 0-10 bar
8	3G00522302	T- joint galvanized FIG.223 1/2
9	3G00528002	Galvanized nipple FIG.280 1/2
10	3A00100302	Male Geka coupling 1/2"
11	3G01200502	Ball valve MF 1/2 black lever
12	3G00513002	Galv. T-joint FIG.130 1/2
13	3G00904100	Pressure reducer 1/2

Pos.	Référence	Désignation
14	3G00301300	Electrovalve NC 1/2
15	3G00528002	Galvanized nipple FIG.280 1/2
16	3G01300201	Needle valve for MIXER 35 1/2 tap syr
17	3G00513002	Galv. T-joint FIG.130 1/2
18	3G00553006	Galvanized extension screw 1/2 X 60
19	3G00509002	Elbow join galvanized 90° FF FIG.90 1/2"
20	3G01700300	3 piece connector MF (I1)
21	3G01600101	Collar 1"
22	3G01100102	Digital flowmeter
23	3G50300704	Steel reduced nipple 3/4X1/2
24	3G00509002	Elbow join galvanized 90° FF FIG.90 1/2"
25	3G01200301	Ball valve MF1/2" hexagonal
26	3G00509204	Elbow join galvanized 90° MF FIG.92 1"
27	3A00100304	Male Geka coupling 1"
28	3G50300500	Stainless steel elbow joint MF 1/4"
29	3G50300100	Steel reduction 1/2X1/4