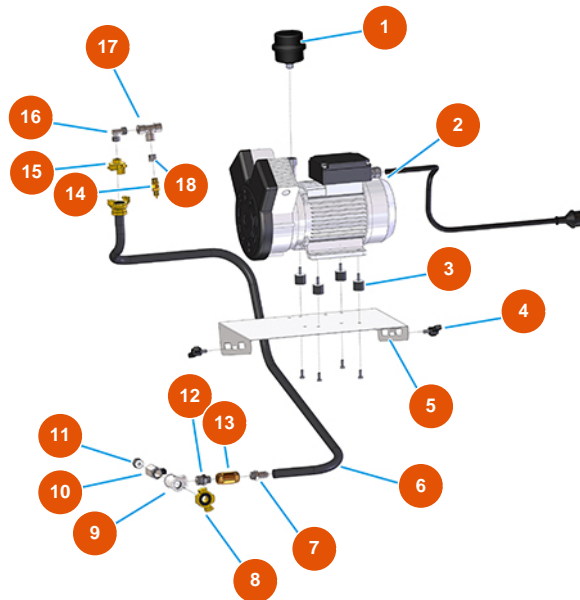


MIXER SPRINTER mortar continuous mixing machine - 2,2 kW - Air group



Détails des pièces

Pos.	Référence	Désignation
1	3B02620000	Cartridge filter holder
2	3B02500000	Single-phase compressor 2 heads 230V
3	3T00200106	Rubber antivibration MF M6X18 25X20
4	3T01505001	Butterfly screw M8 x 15
5	4023000601	Group support compr. MOSQUITO TOP galv.
6	3F00700820	Hose EPDM 13X19 L=1100+1 Geka coup.
7	3G50300202	Hose connector 3/8"X14"
8	3A00100302	Male Geka coupling 1/2"
9	3G00513002	Galv. T-joint FIG.130 1/2
10	3G01200102	Tap MINIBALL M/F 1/4"
11	3G50200100	Legris coupling in-line 6X1/4 3175
12	3G50300700	Steel reduced nipple 1/2X3/8
13	3G01300401	Valve RITEGNO EUROPA 3/8"



Pos.	Référence	Désignation
14	3G01300304	Safety valve 1/4" TAR.3 BAR
15	3A00100201	Female Geka coupling 3/8"
16	3G50300503	Steel elbow MF 3/8"
17	3G50300800	Steel T-joint MFF 3/8
18	3G50300110	Steel reduction 3/8"-1/4"