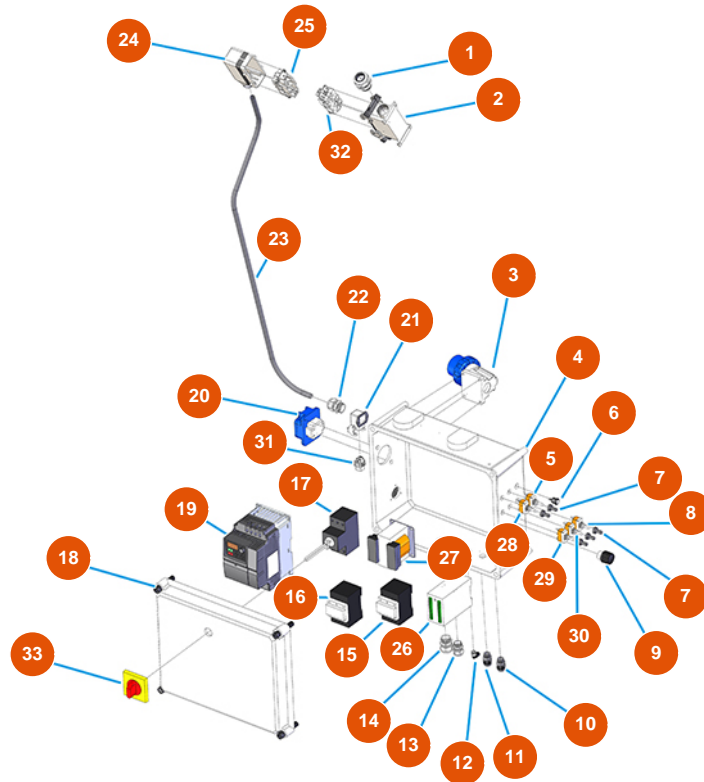


MIXER SPRINTER mortar continuous mixing machine - 2,2 kW - Electric panel (until 12/2020)



Détails des pièces

Pos.	Référence	Désignation
1	3C04200208	PG21 anti-tear cable gland
2	3C02800400	16-pin surface-mount cover with 2 levers
3	3C03000103	2-pin + ground 16A surface-mount male plug
4	3C00110464	4
5	3C01801000	Commutator switch 1-0 T115 F-A
6	8055000100	Led / led hose D.10 MM
7	3C02100100	Rubber protection for switch
8	3C01800200	Commutator switch (1)-0-(1) FASTON T115 G-A
9	3C00300101	Simple linear potentiometer 5K
10	3C04200201	PG.9 anti-tear cable gland
11	3C04200201	PG.9 anti-tear cable gland
12	3G50200201	Legris coupling elbow joint 6X1/8 M

Pos.	Référence	Désignation
13	3C04200205	13
14	3C04200206	14
15	3C00700110	15
16	3C00700117	Counter 4 KW 24V AC SIEMENS
17	3C01030108	ABB-MS325 20A magnetic
18	3C00110163	18
19	3C05100107	Mono inverter 230V 2,2Kw MOSQUITO/PLUS
20	3C02601001	Interlocking socket SCHUKO PALAZZOLI
21	3C02800500	Bend socket base CK03IA
22	3C04200206	22
23	3C03900008	CVVF 18BR 7x2.5 electric cable
24	3C02800100	Horizontal 16-pin cover
25	3C02700600	4/2-pin 80A female insert
26	3C03202500	Black box programmer SPRINTER
27	3C00500101	Transformer 40VA P.230 SEC.16/24V
28	3C01800402	Lever commutator switch T315N-A ON-ON
29	3C01800500	Commutator switch 1-0 T115 A-A
30	3C01800100	Commutator switch 1-0-1 T115 E-A
31	3C02700200	4-pin + ground 10A female insert
32	3C03100400	4/2-pin 80A male insert
33	3C01300207	Maneuver x ABB red/yellow IP64 MS1