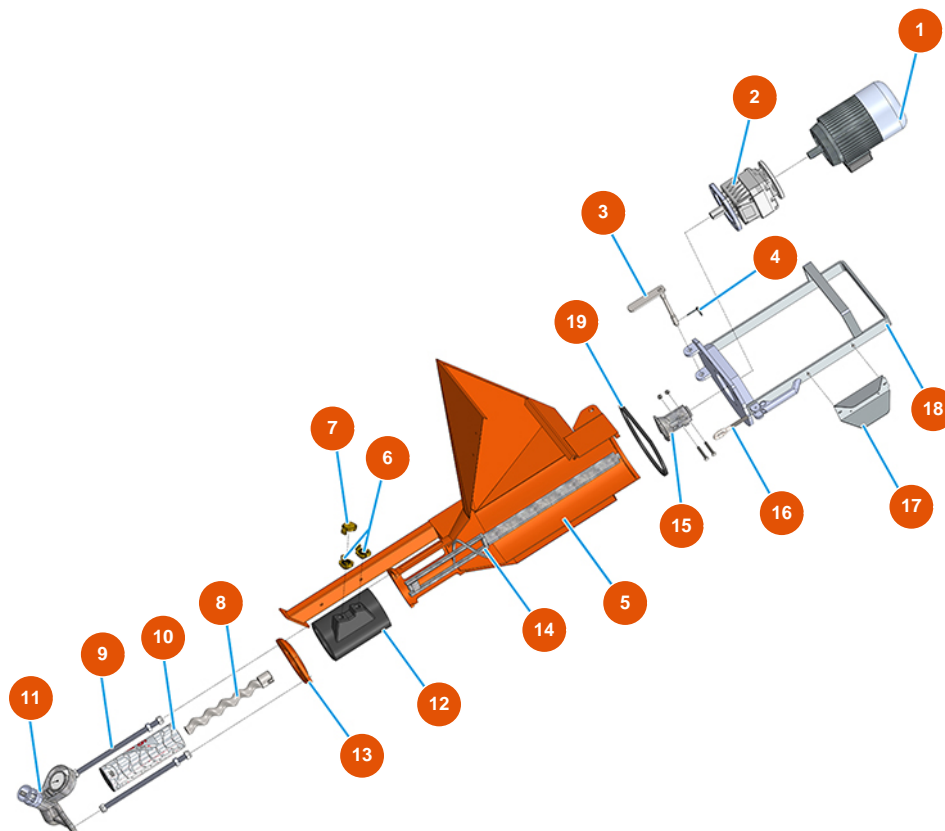


## MIXER SPRINTER mortar continuous mixing machine - 3 kW - Mixing group



### Détails des pièces

Pos.	Référence	Désignation
1	3D00200401	3 kW motor for SPRINTER and REMIX
2	3D00310101	Mixing chamber reducer for MIXER LIGHT, PLUS MONO, SPRINTER and CD 25
3	701800600	3
4	3T01200101	Split pin Ø 4,5
5	701202120A	5
6	3A00100302	Male Geka coupling 1/2"
7	3A00100401	Geka plug
8	7009009000	MIXER 32 rotor
9	8023003000	Tie rod M16 L = 350 F55 / 55 + screws
10	3F00510500	MIXER 32 straight stator
11	8012006000	Pump flange for SPRINTER and LIGHT
12	4002103000	Polyurethane mixing chamber for MIXER PLUS and SPRINTER vers. 2020
13	400210230A	Support for mixing chamber MIXER PLUS vers. 2020

<b>Pos.</b>	<b>Référence</b>	<b>Désignation</b>
14	7003020000	Mixing shaft for SPRINTER
15	700600650S	Motor coupling for PLUS MONO, SPRINTER and REMIX - h=25 - Ø20
16	3T01000400	Galvanized threaded ring lever closing 262
17	4906511000	Protection bent plate plug 76X83 galv.
18	701100300G	Mixing chamber motor support for MIXER PLUS and SPRINTER
19	3G01000151	EPDM seal 20X15 black